
2005 Grower Survey

Horst Caspari
Colorado State University
Western Colorado Research Center
Grand Junction, CO 81503
Ph: (970) 434-3264

Survey summary

Survey forms sent	162
Survey forms returned	91
Commercial growers	88
Mail undelivered	3
Not a commercial grower	0
Rate of return	54 %

Non-respondents: established growers

30 growers who provided data in previous surveys did not respond to the 2005 survey

- 117 total acres (~16 % of CO total)
- 110 producing acres
- Produced ~145 tons in 2004 (~15 % of CO total)

Another ~20 growers have not replied to any of the surveys since 2000.

Definition

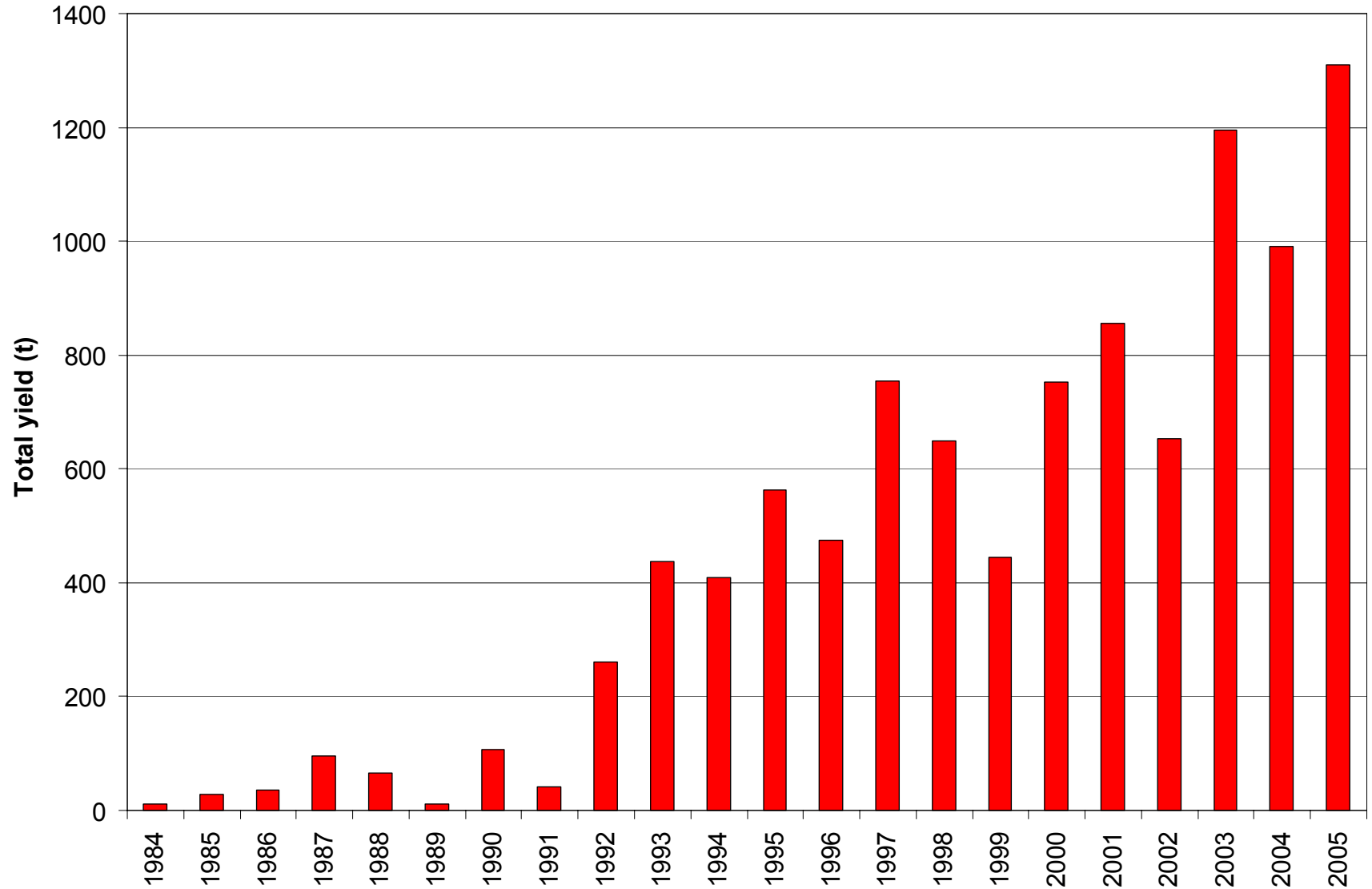
“Producing area”

- vineyards that were planted prior to 2004

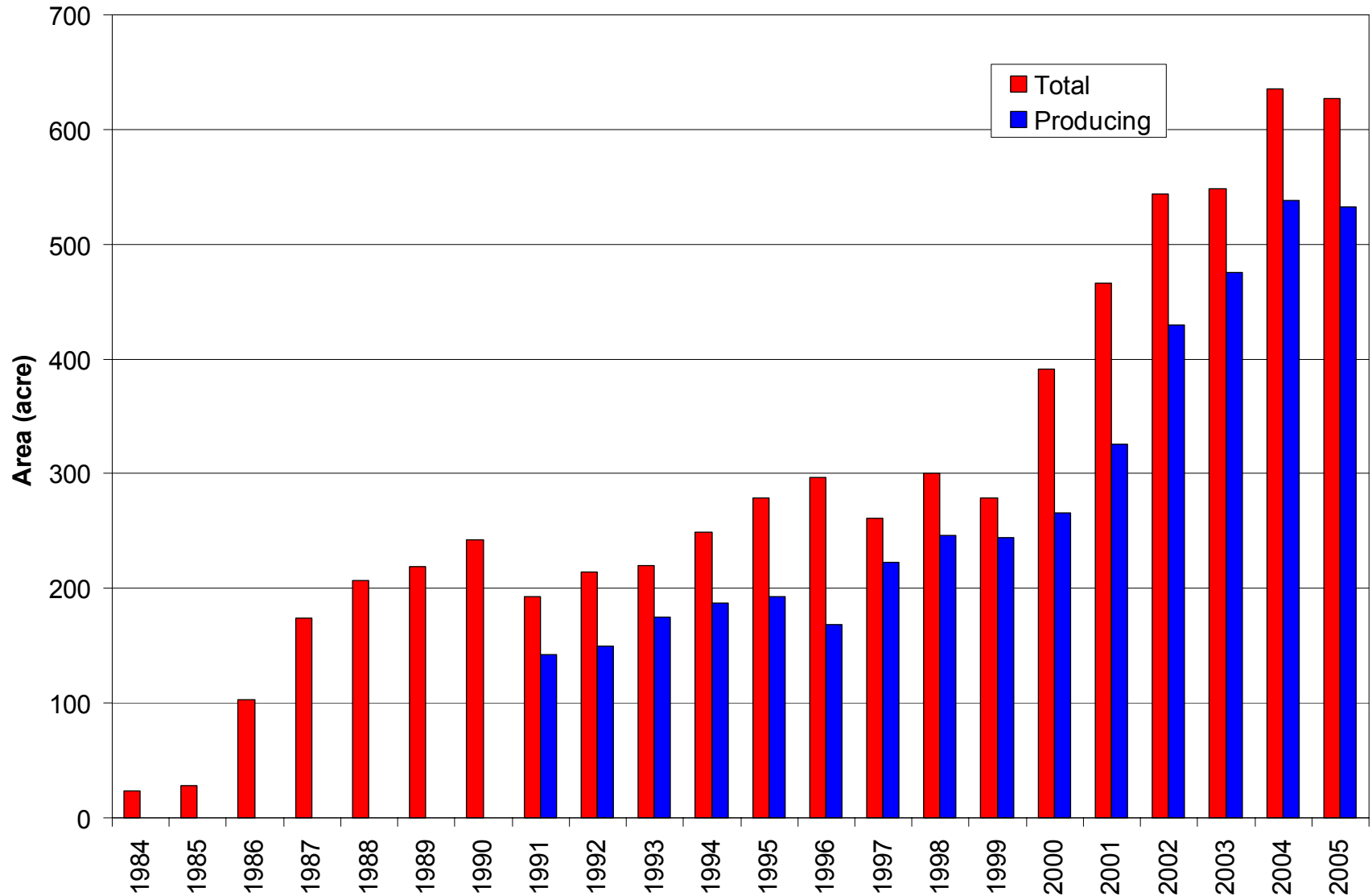
Survey results

Total vineyard area (acre)	627
Wineries	281 (45 %)
Contract growers	346 (55 %)
Producing vineyard area (acre)	533
Wineries	254 (48 %)
Contract growers	279 (52 %)
Average vineyard size (acre)	7.0
Total production (t)	1,310
Average yield (t/acre)	2.50
Average grape price (\$/t)	1,285
Average picking costs (\$/t)	161
Gross return (\$/acre)	3,651

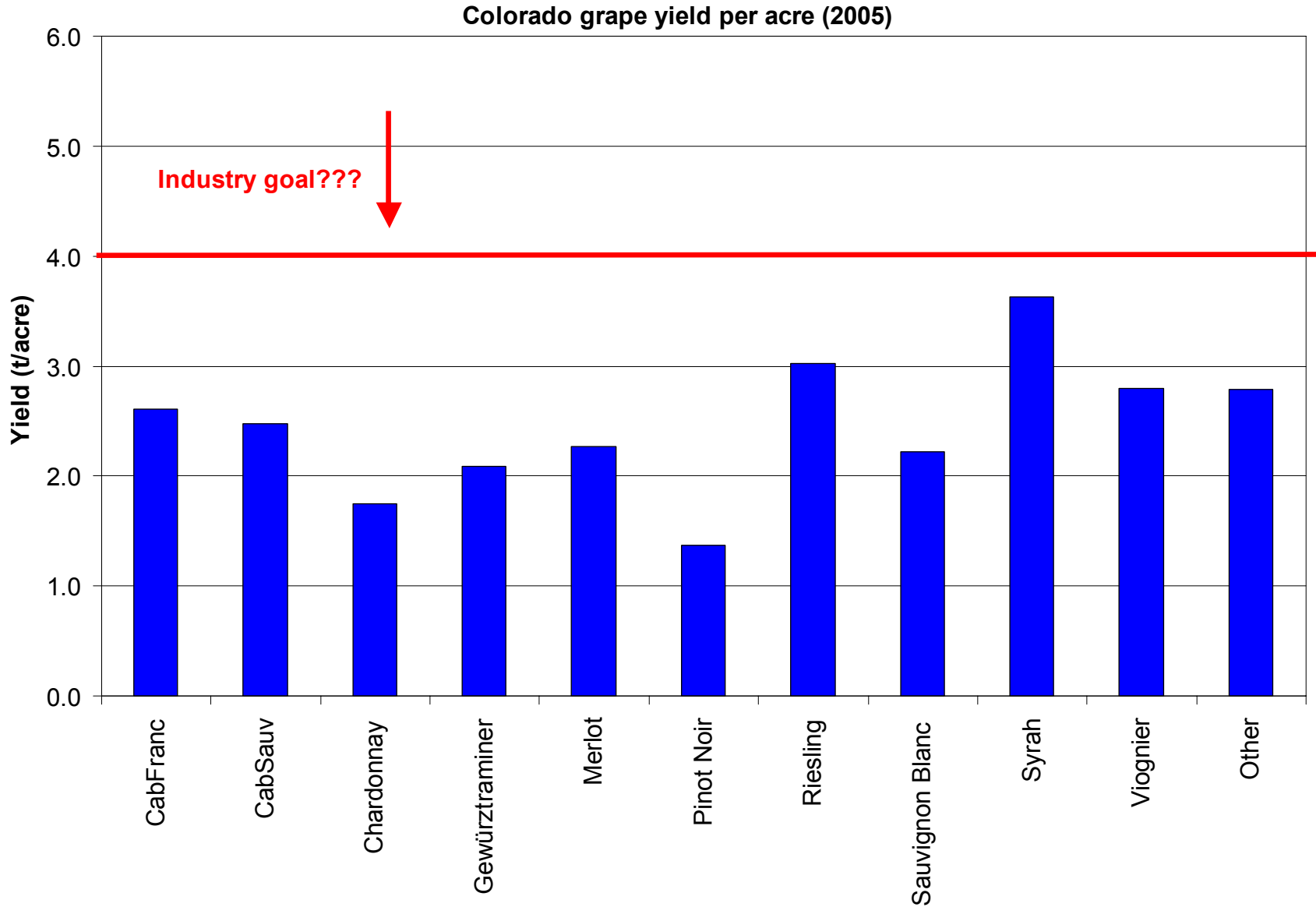
Colorado grape production by year



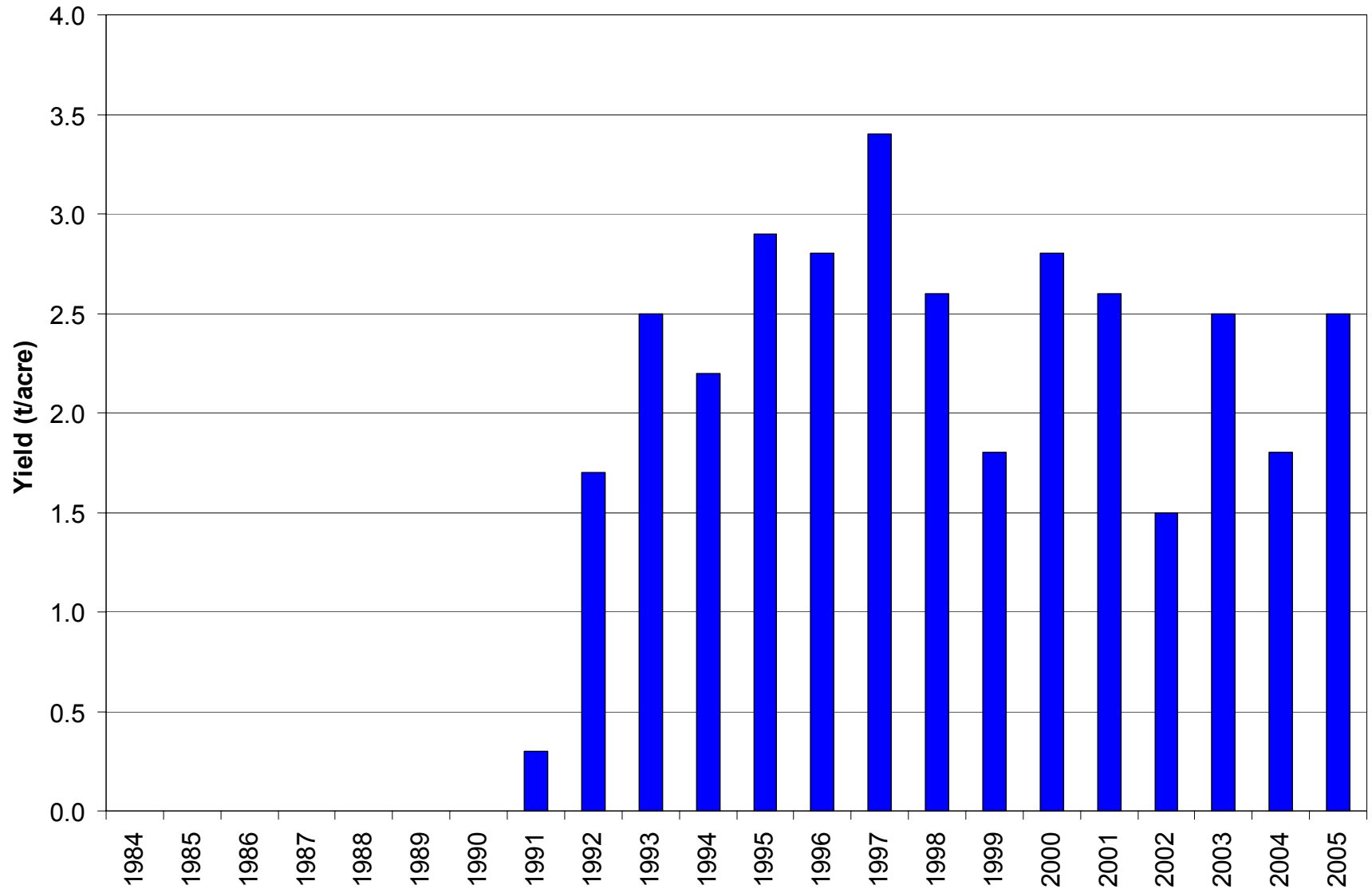
Colorado grape growing area by year



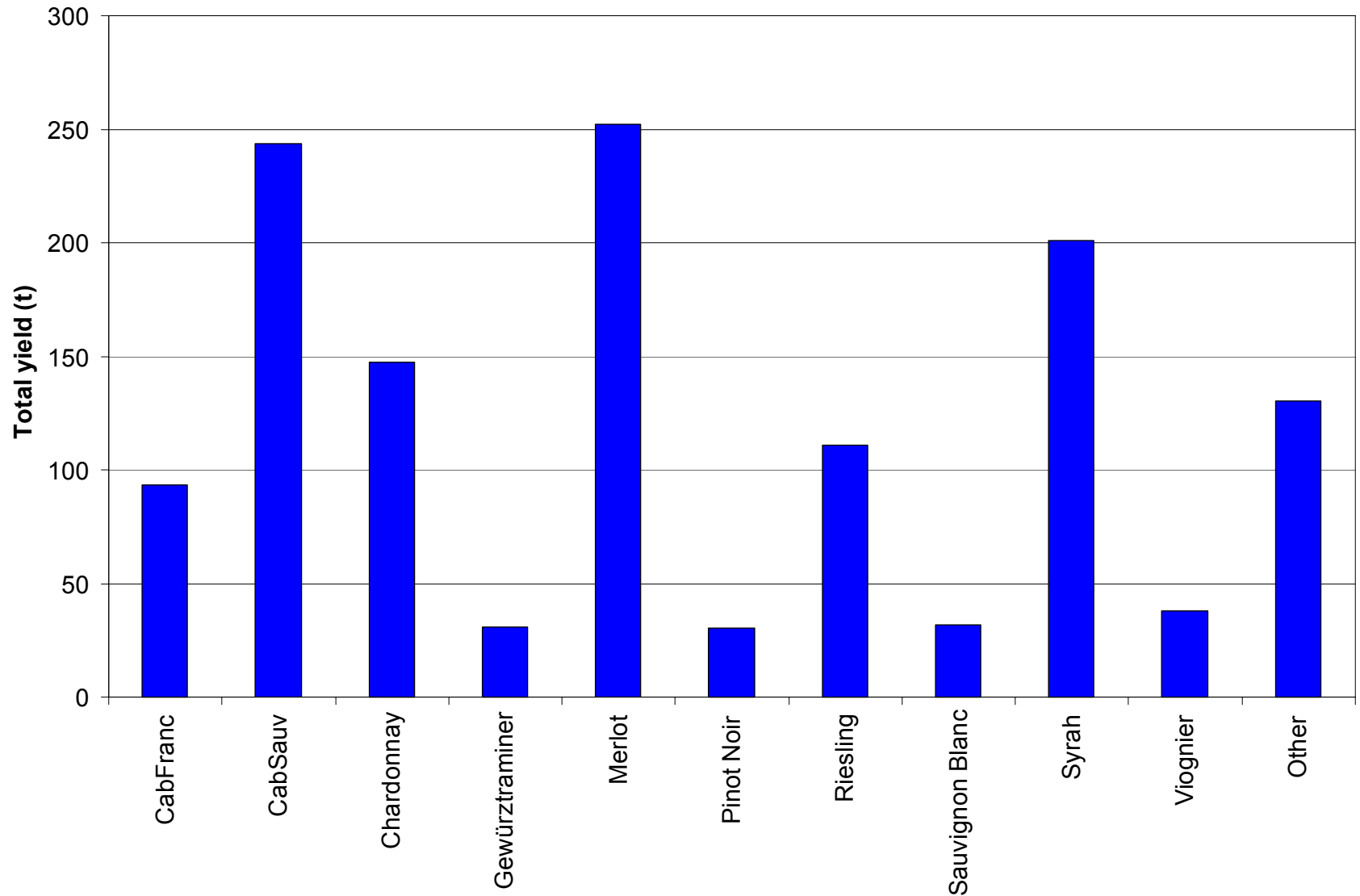
Colorado grape yield per acre by variety



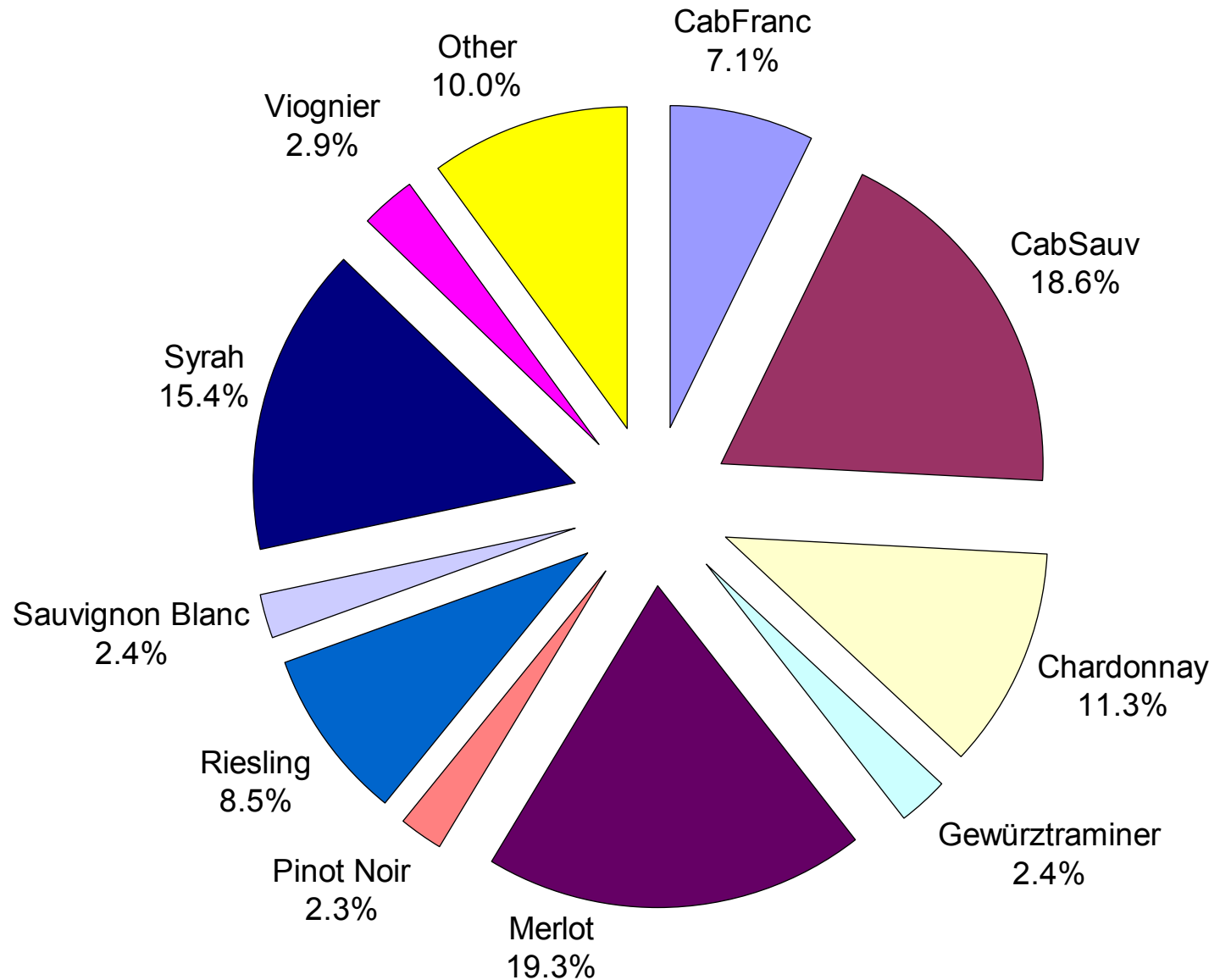
Colorado grape yield per acre by year



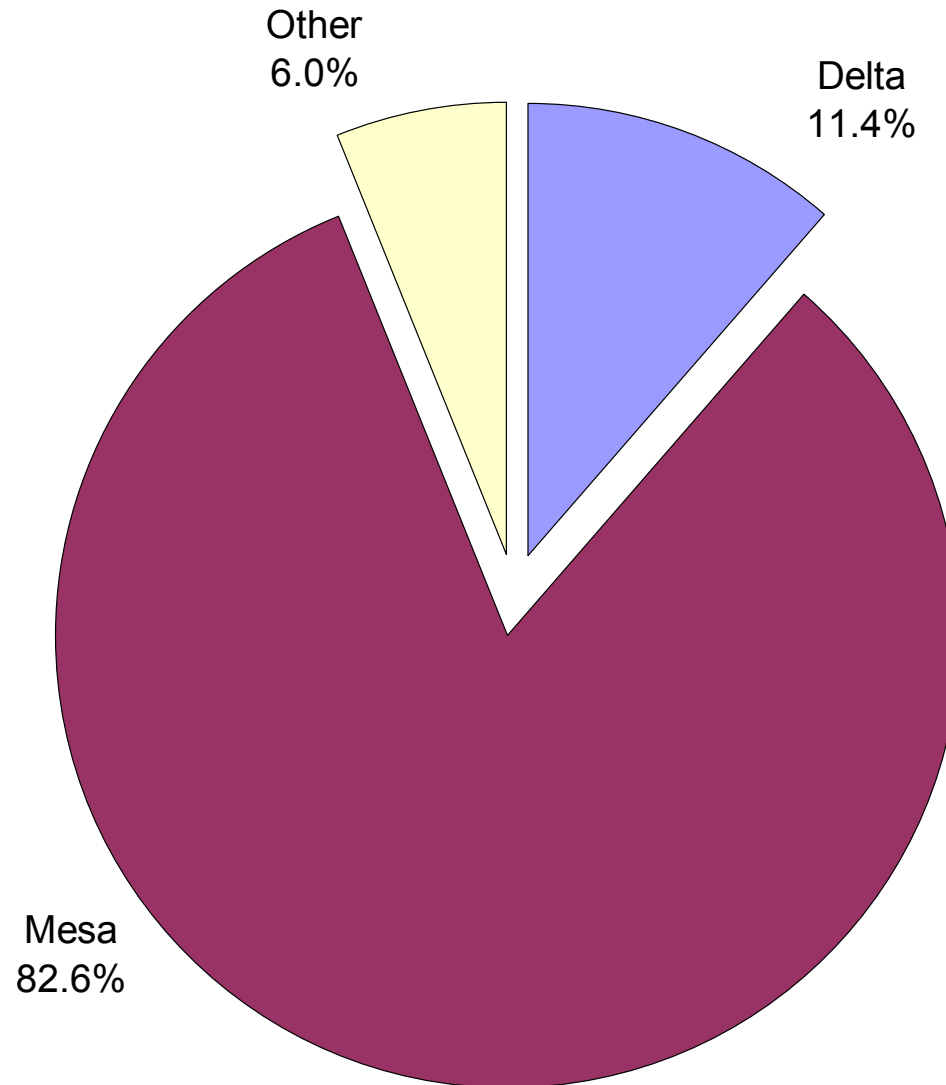
Colorado grape production by variety



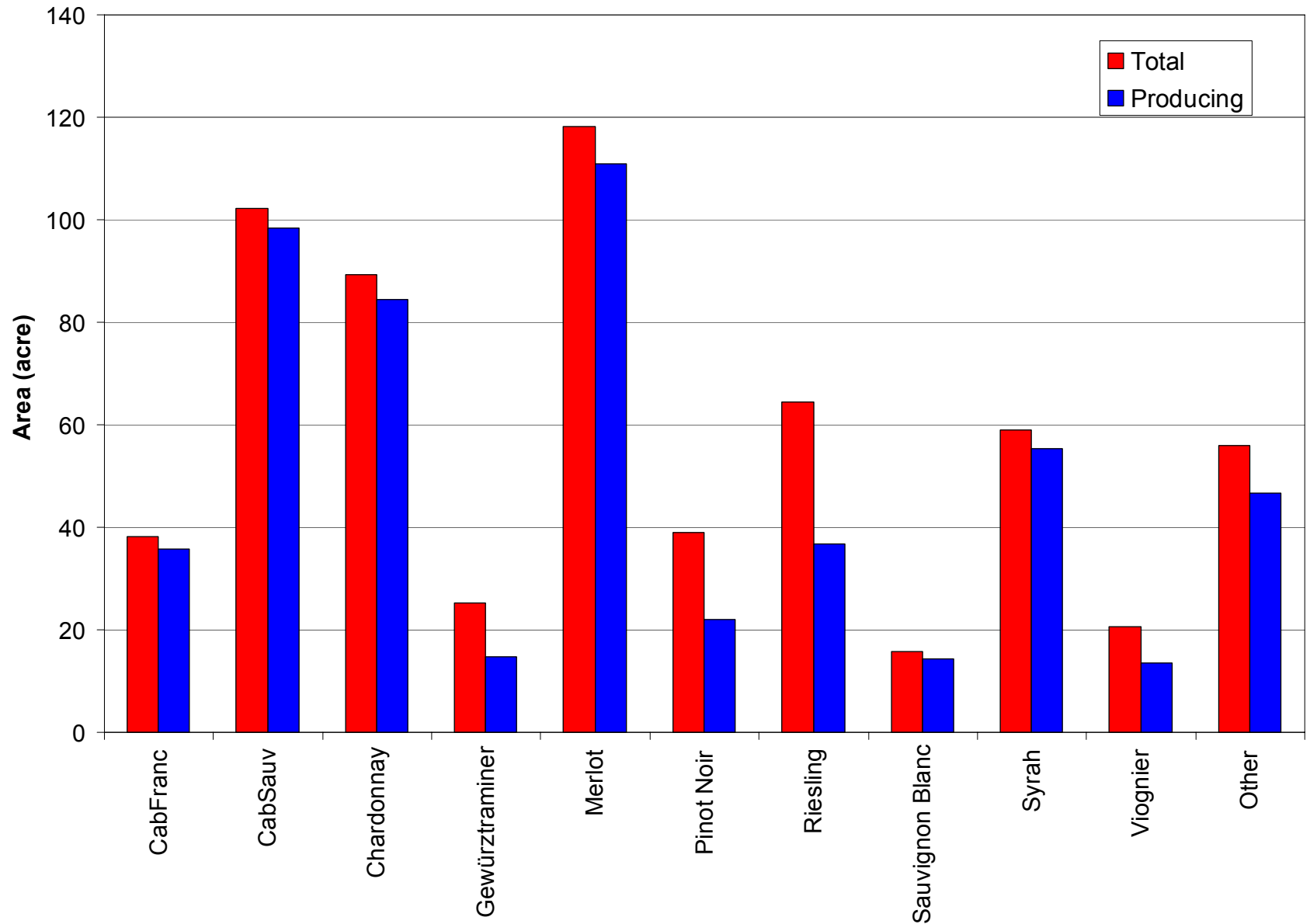
Colorado grape production by variety



Colorado grape production by county

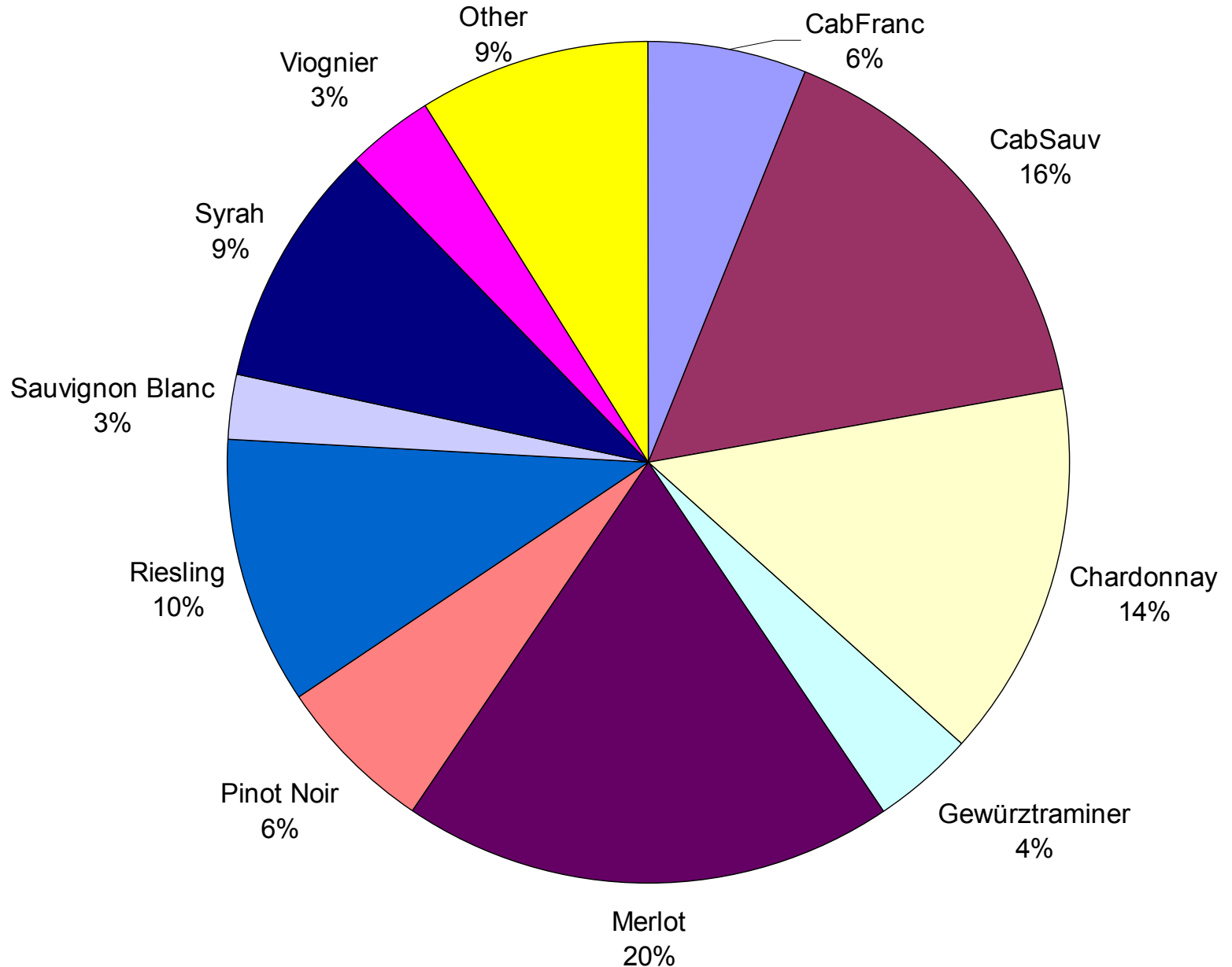


Colorado grape growing area by variety

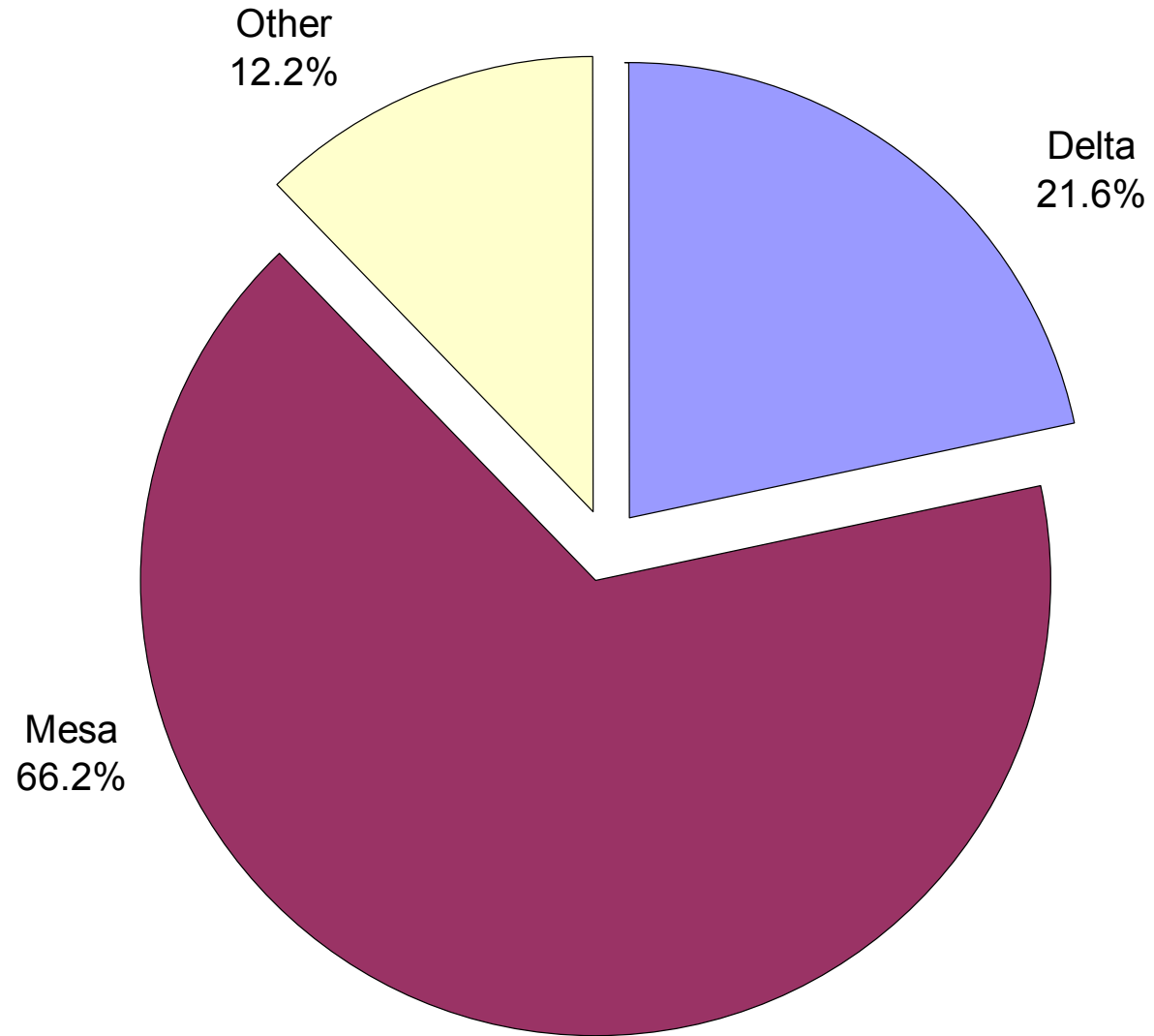


Colorado grape growing area by variety

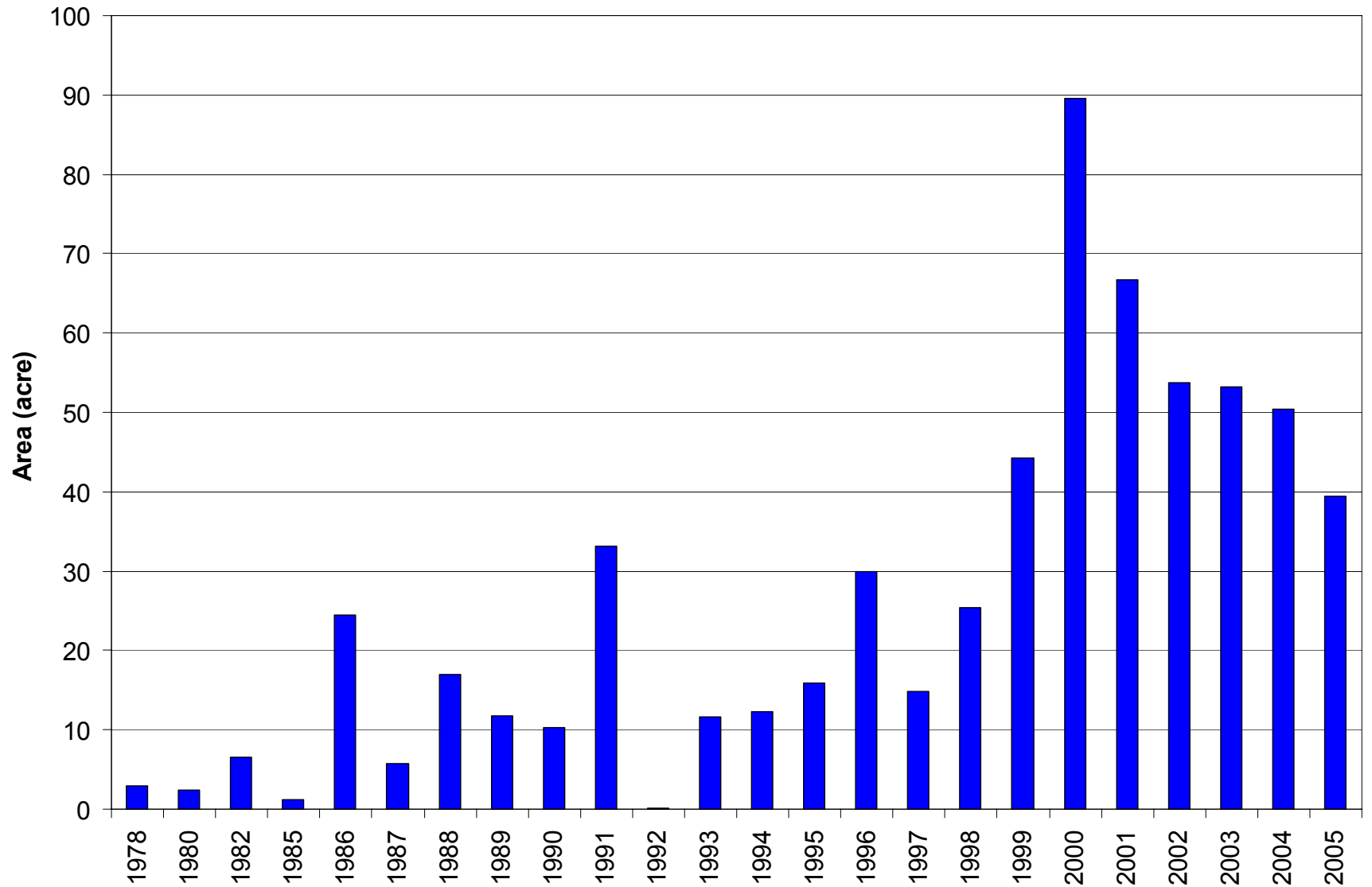
Colorado total vineyard area (2005)



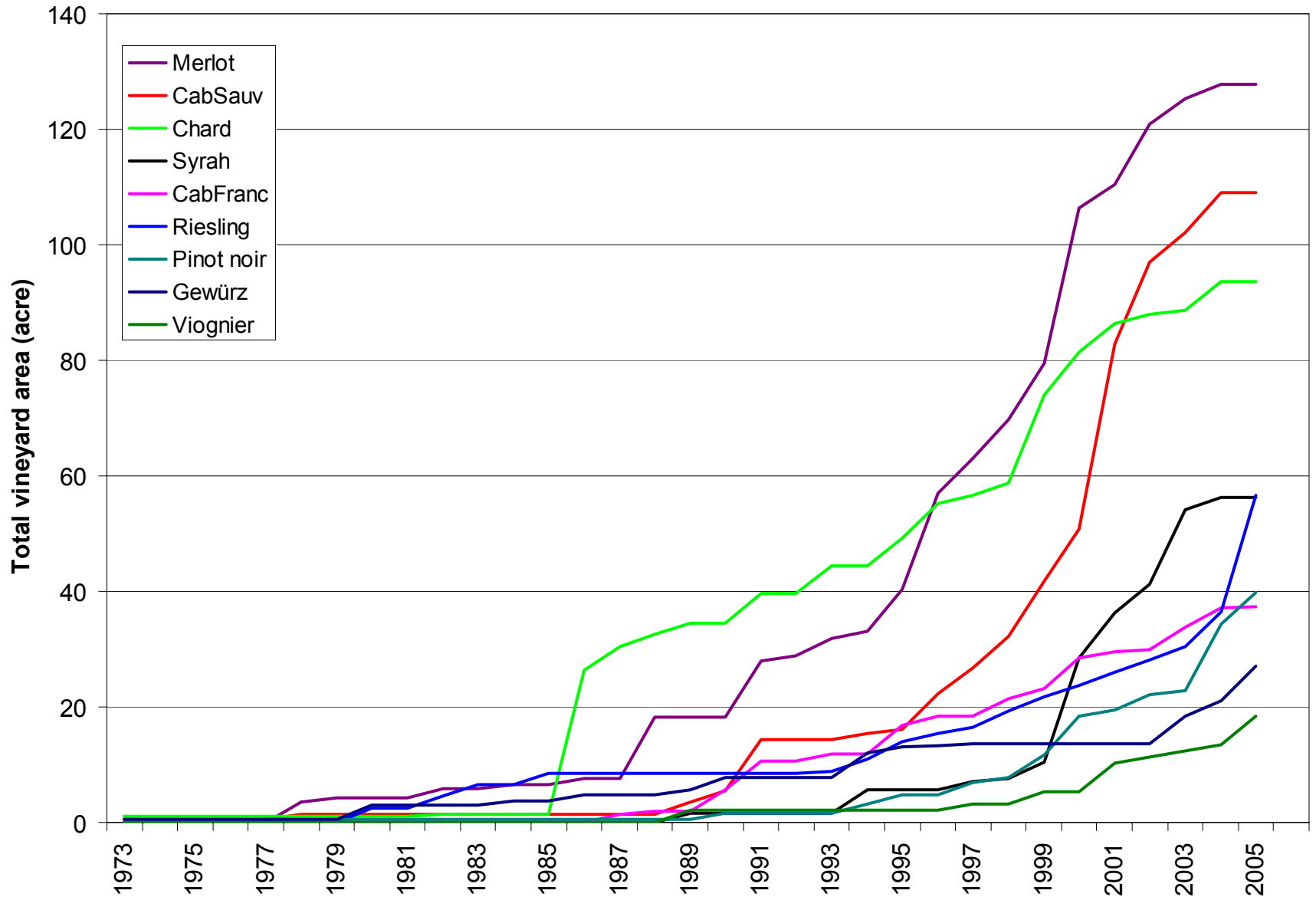
Colorado total vineyard area by county



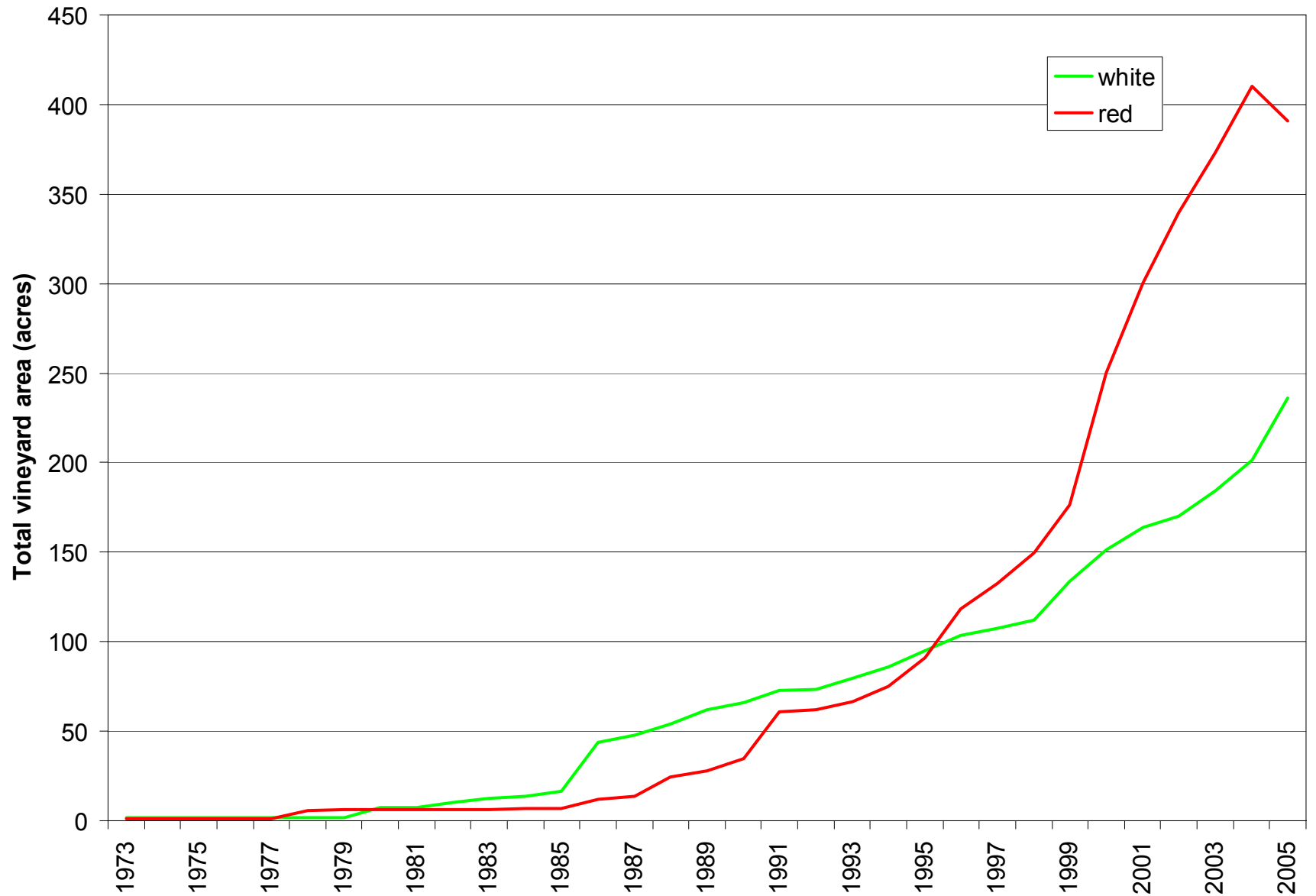
Colorado vineyards by planting year



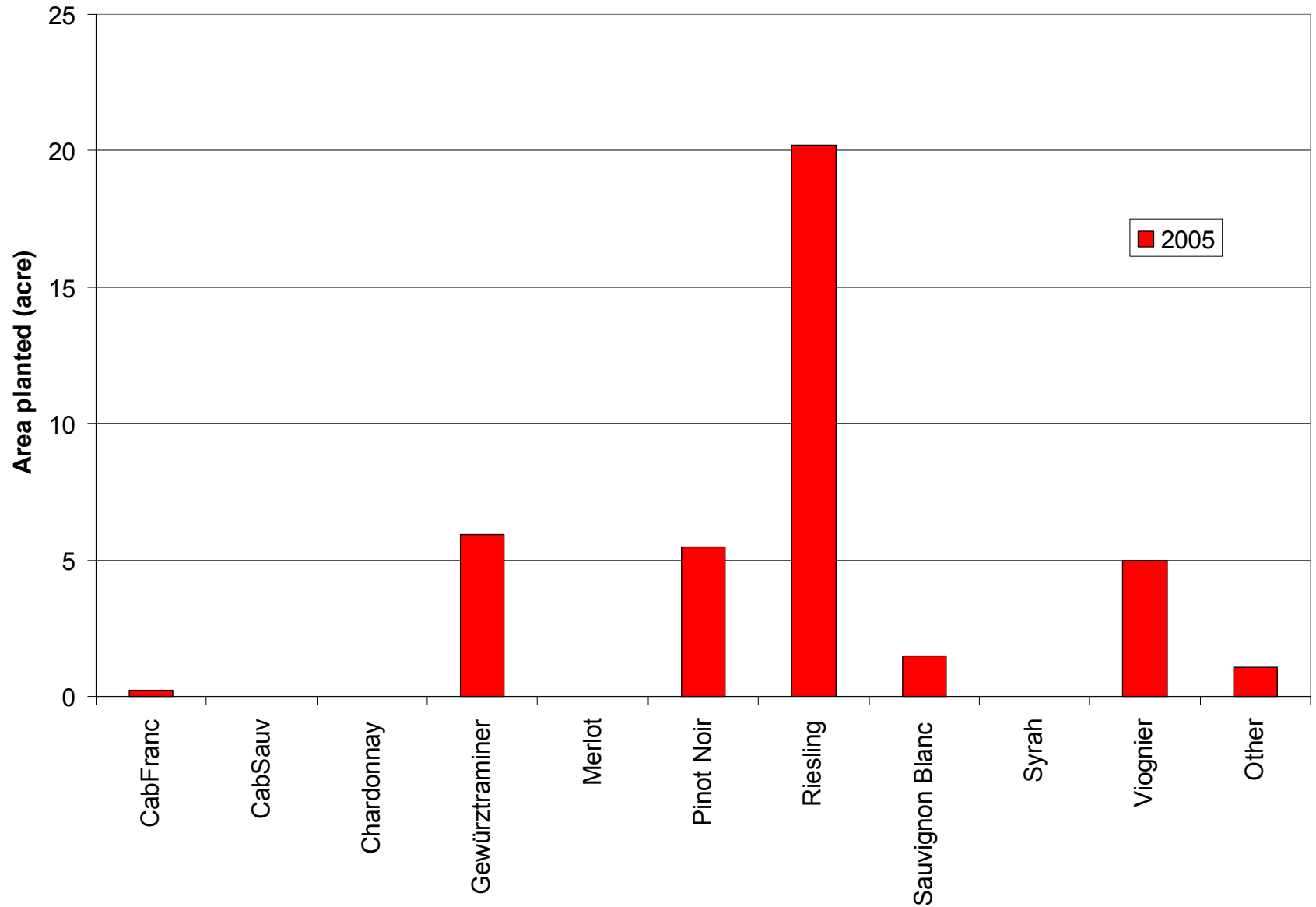
Colorado area for main varieties



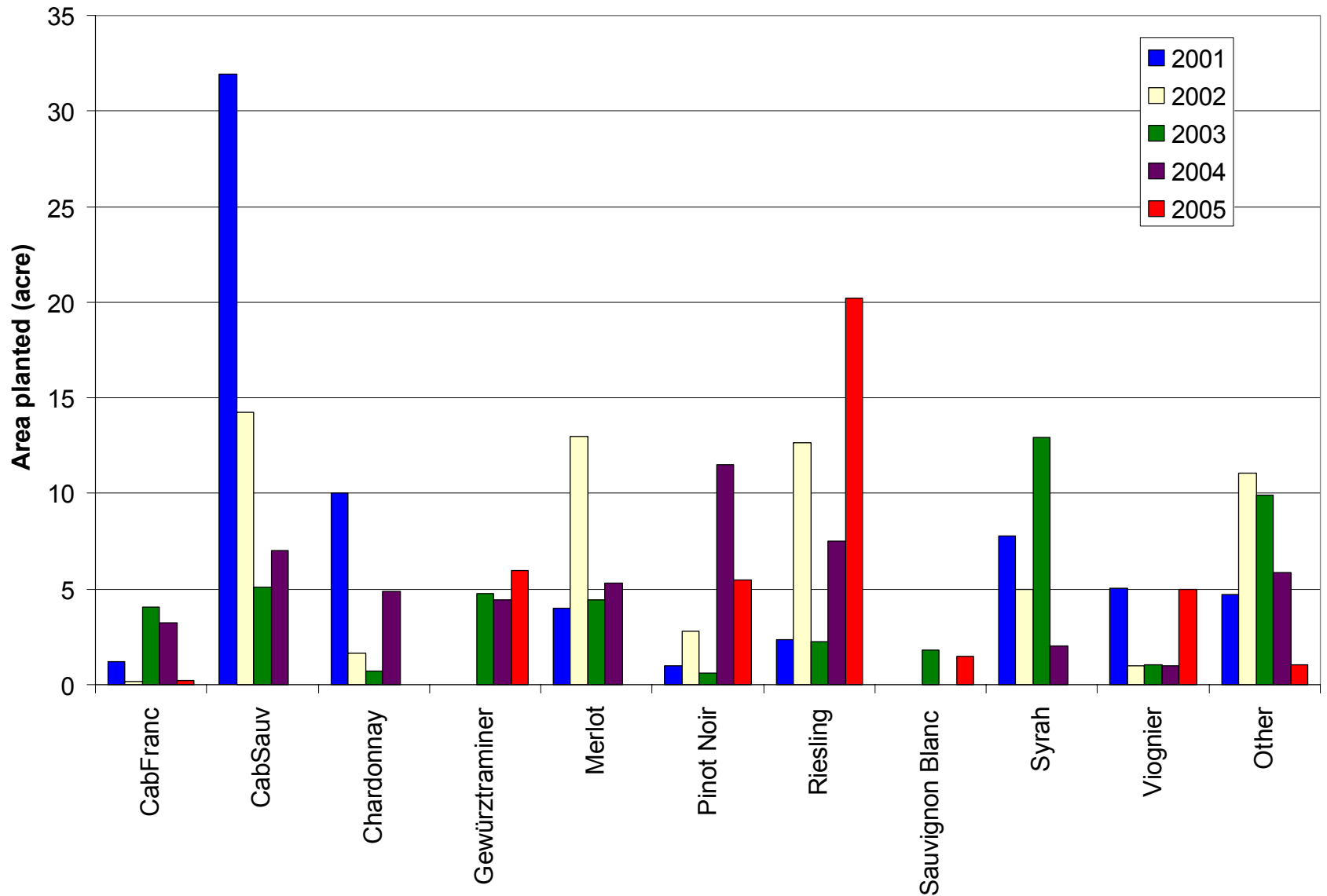
Colorado wine varieties – red & white



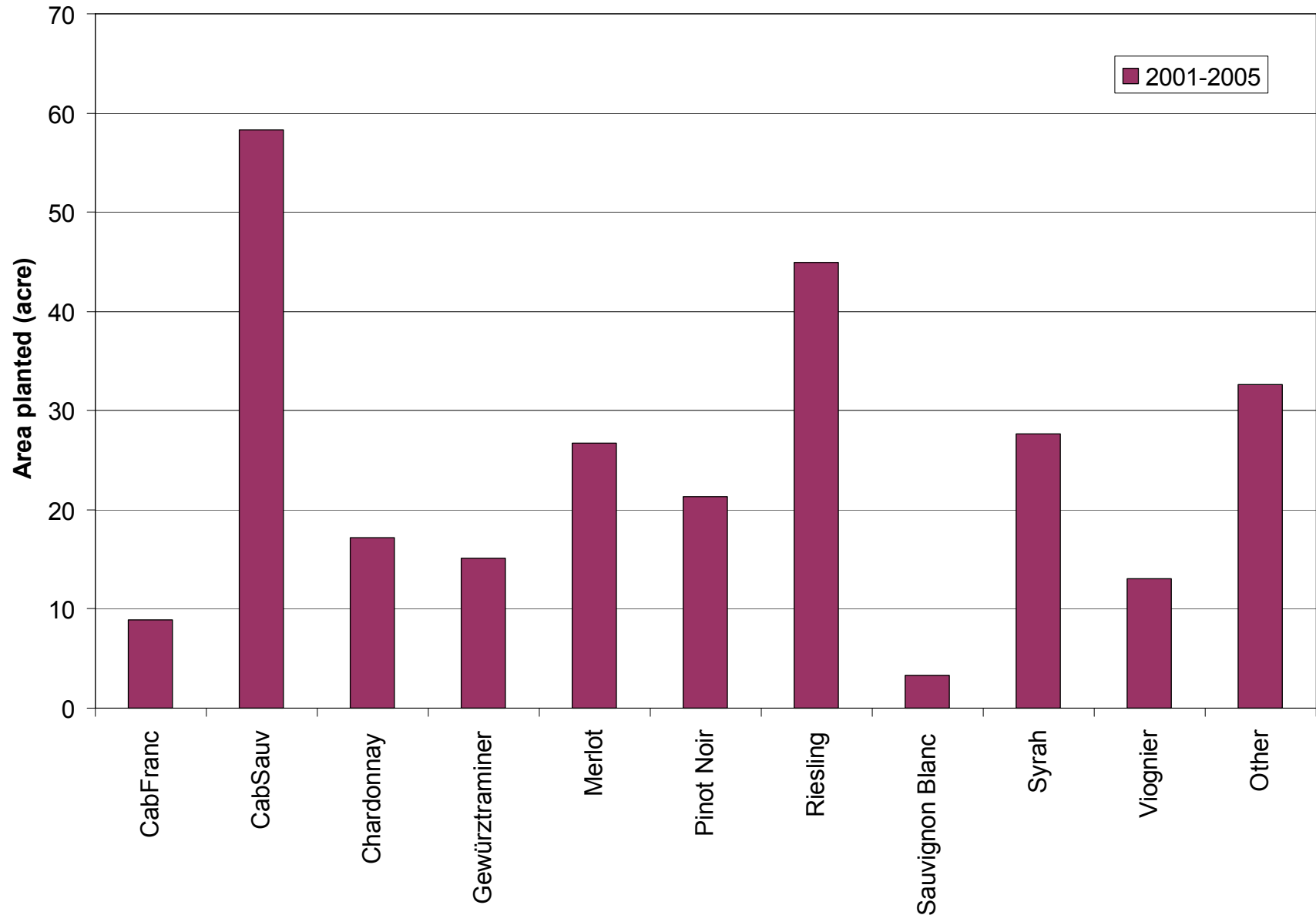
What has been planted?



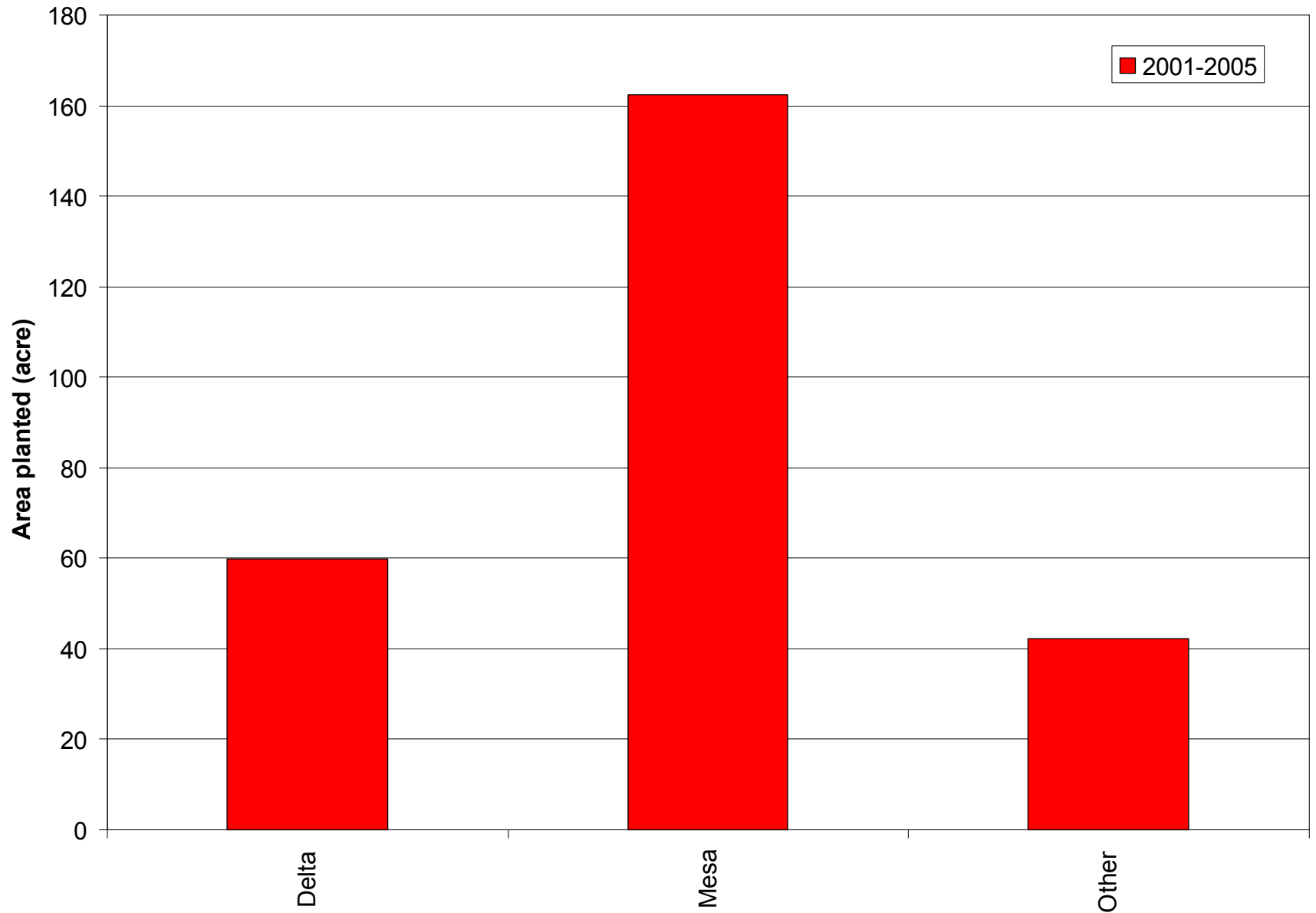
New plantings 2001 - 2005



Total plantings 2001 - 2005

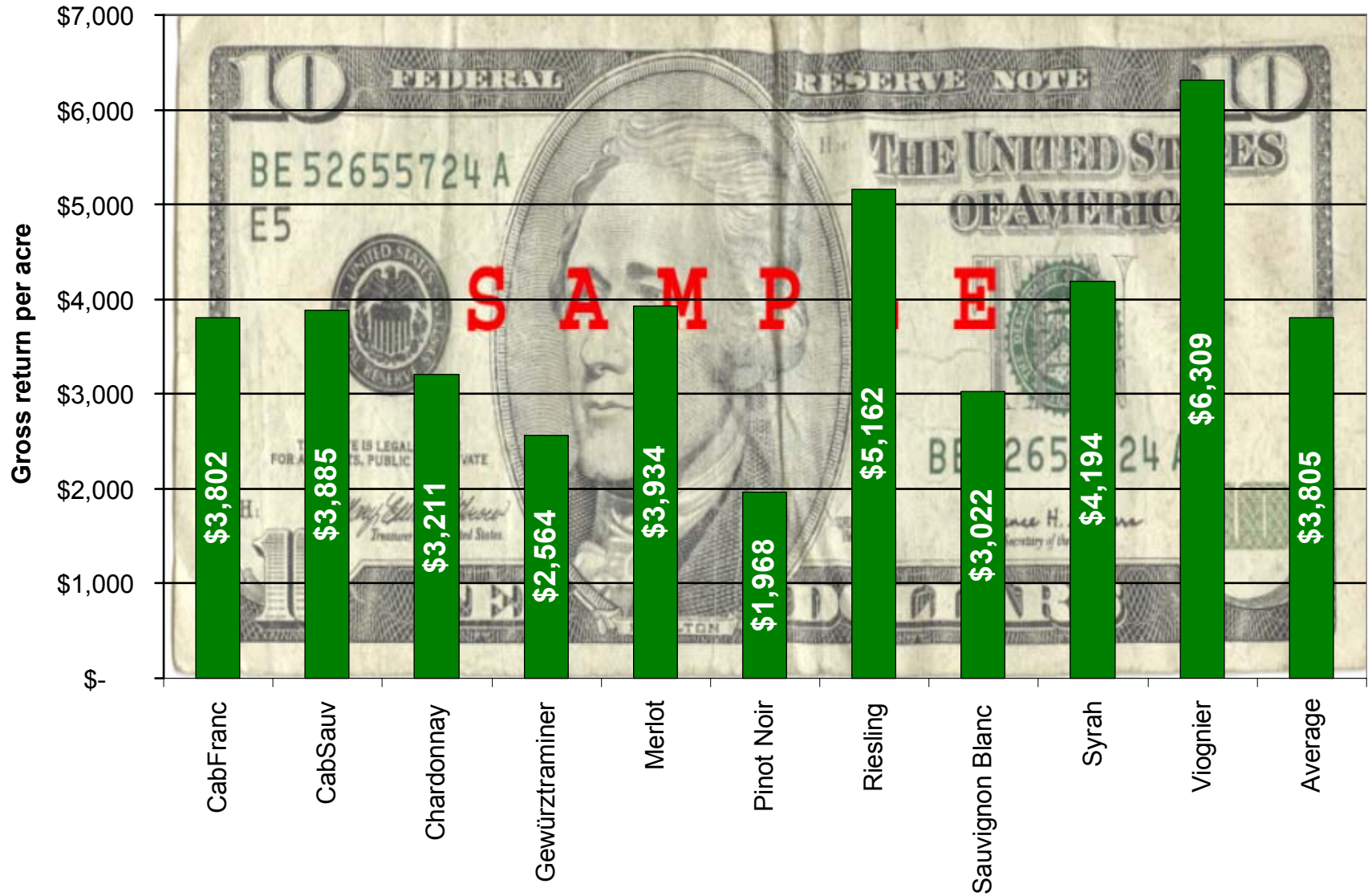


New vineyard area by county



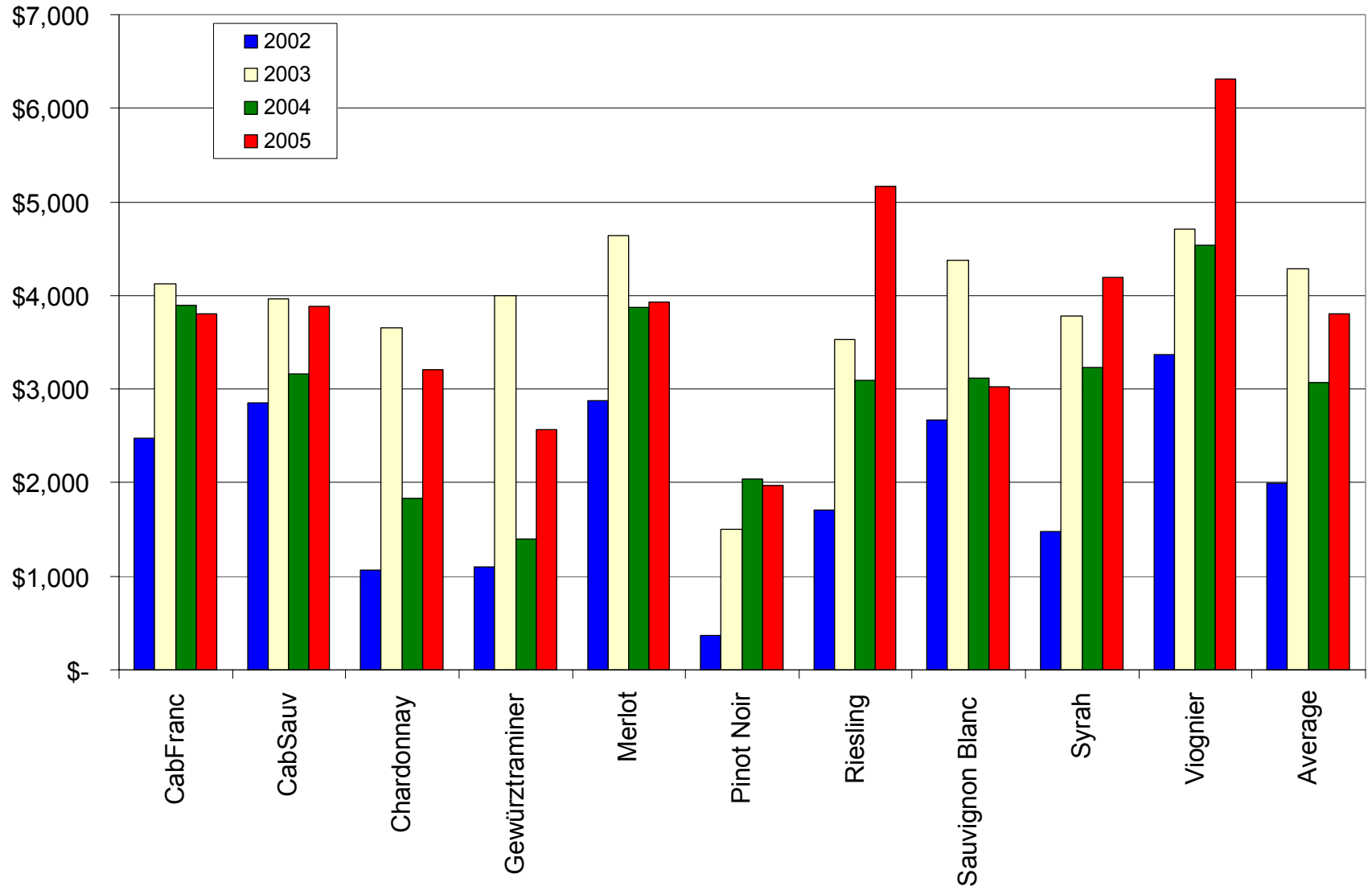
Gross return per acre, 2005

Gross return per acre (2005)

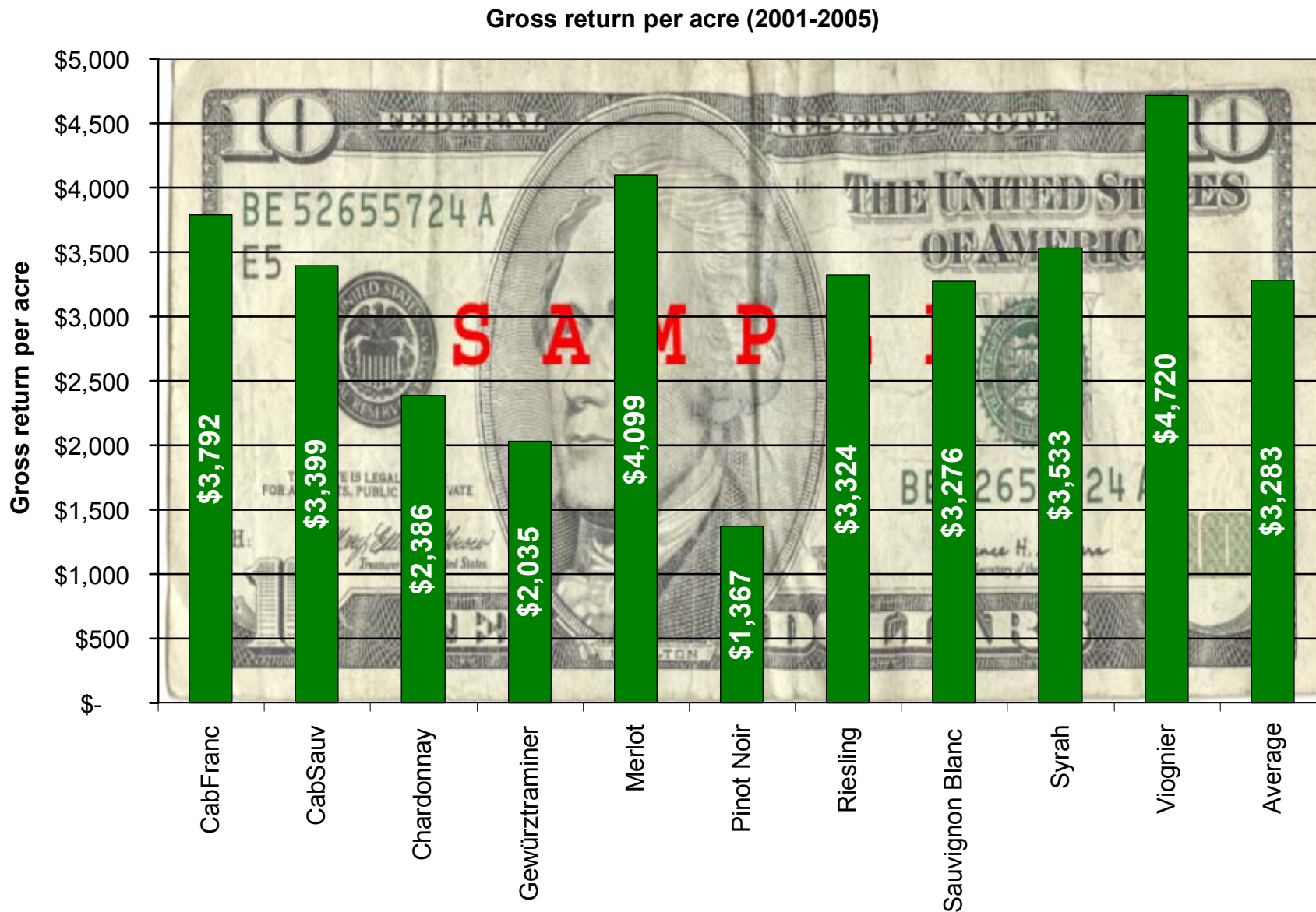


Gross return per acre, 2002-2005

Gross \$ per acre by year and variety



Average gross return per acre, 2001-2005



Looking ahead for 2006

In 2006, we will have

- ~650-700 acres in production
- At a moderate 2.5 t/acre we will have 1,600 - 1,800 tons
- BUT, not all of the grapes produced in 2005 found a home (when production was ~1,500 tons)
- Colorado wine sales totaled ~690,000 liters from July 2004 to June 2005 (equivalent to ~1,150 tons of grapes)
- Wines sales will need to continue to grow at a faster rate than vineyard plantings to keep pace with the increasing grape production

Acknowledgements

Thanks to

- All growers who responded to the survey
- CWIDB for funding the survey
- Christa Hawk, CSU for help with data entry, analysis, and presentation

“Guesstimate” of Colorado grape growing area

Total vineyard area (acre)	750-850
Wineries	45 %
Growers	55 %
Producing vineyard area (acre)	650-700
Wineries	45 %
Growers	55 %
Average vineyard size (acre)	7.0

Note: This “guesstimate” was prepared from data provided in the 1999 to 2005 surveys. A number of growers never responded to either of those surveys. Taking into account non-respondents, I estimate the total Colorado vineyard area at around 750-850 acres.

"Guesstimate" of Colorado Vineyard Area

